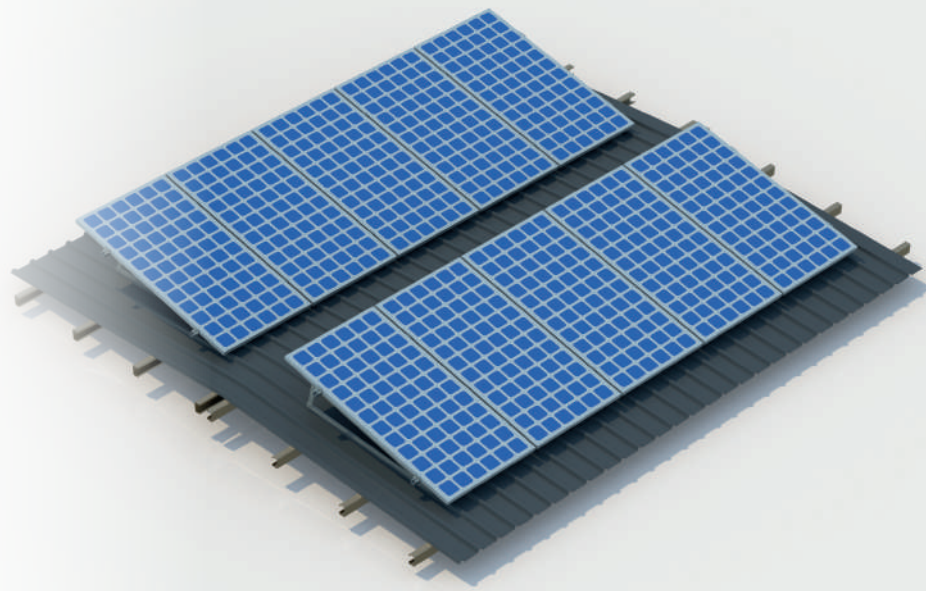




PROINSO PV RACK TRIANGLE PRO



Robust aluminium structures
designed and made in Europe



PROINSO

3GW
PROJECTS SUPPLIED

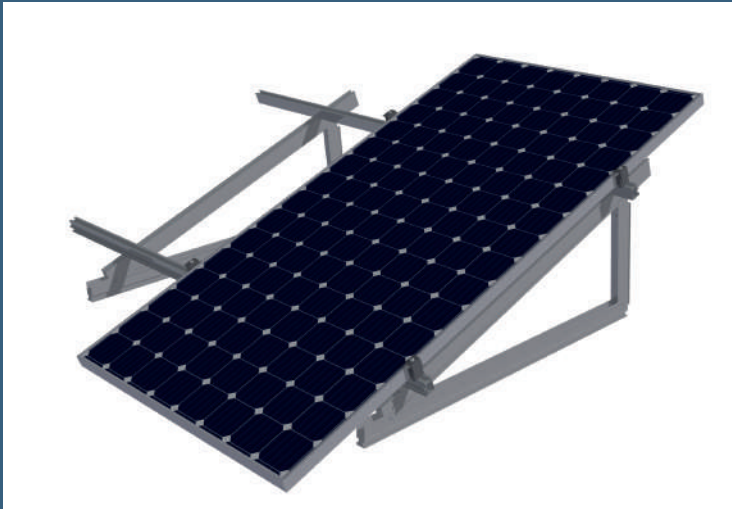
10+ YEARS
EXPERIENCE IN SOLAR

20+ OFFICES
ACROSS 5 CONTINENTS

3 DIVISIONS
DISTRIBUTION & INTEGRATION,
TECHNOLOGY,
EPM

2,500
QUALIFIED INSTALLERS

PROINSO PV Rack is one of the simplest rooftop structures to assemble on the PV market. It adds exceptional value to both commercial and residential projects by offering versatility and usability. Designed and manufactured in Europe and certified by TÜV, PROINSO PV Rack reduces the risk to the installer.



Our TRIANGLE PRO is designed to easily fit a multitude of different flat roof applications, due to its variable tilt angle and its several foot options for both ballasted solutions and roof penetration.



EASY TO INSTALL

The TRIANGLE PRO was specifically developed to allow an easy project-specific adjustment for various special requirements on flat roofs. The system is inherently flexible and can be adapted to project specific requirements for optimal power production.



COST EFFICIENT

The TRIANGLE PRO allows optimisation of components used through project customisation. Our engineers will calculate the required quantity of rails and fixing points based on your project specifications, enabling you to reduce the overall cost of system.



ROBUST & DURABLE

All PROINSO PV Rack components are made from aluminium and stainless steel and certified by TÜV Rheinland. The high resistance to corrosion guarantees a maximum life span. Additionally, all structure parts can be recycled.



TECHNICAL SPECIFICATIONS

APPLICATION	Flat roofs, ground or pitched roofs (check with designer)
BUILDING HEIGHT	Depends on wind loads on site
PV-MODULES	Framed, frameless
MODULE LAYOUT	Serial (up to approx. 12m per frame unit)
MODULE ORIENTATION	Portrait, Landscape
PITCH	10°-15°, 20°-30°, 35°-45° (other upon request)
SIZE OF MODULE ARRAY	Any size possible
POSITION OF THE MODULE ARRAY	No special requirements
ROOF CLEARENCE	80mm to 100mm (other upon request)
STANDARDS	Eurocode 0 – Basis of structural design Eurocode 1 – Action on structures Eurocode 9 – Design of aluminium structures
SUPPORTING PROFILES	Extruded aluminium profiles (EN AW 6063 T6)
RAIL FIXATIONS	Side fixing clip: Aluminium (EN AW 6063 T6)
SMALL PARTS	Stainless steel (V2A)
COLOUR	Aluminium: plate finish
WARRANTY	10 years



EACH 1KW BOX CONTAINS THESE ELEMENTS



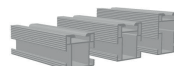
Triangle



End clamp



Mid clamp



Base rail



Connector



Roof or ballast connection

PROINSO HQ

943 Yeovil Road
SL1 4NH Slough
UNITED KINGDOM
info@proinso.net
+44 (0) 17 5353 8448

PROINSO SOUTH AFRICA

7th Floor, Mandela Rhodes Place,
Cnr of Wale and Burg Street,
Cape Town, 8000,
South Africa
southafrica@proinso.net
+(27) 021 410 8908

PROINSO AMERICAS

1030 Riverside PKWY Suite 130
West Sacramento
CA 95605, United States
usa@proinso.net
(+1) 916 374 8722

PROINSO EAST ASIA

15th Floor, 100 Queen's Road
Center Central, Hong Kong
china@proinso.net
+852 3960 6363

PROINSO SOUTH ASIA

2-22 Evergreen Industrial
Estate Shakti Mill Lane
Mahalaxmi
400011 Mumbai, India
india@proinso.net
(+91) 022 4004 2286