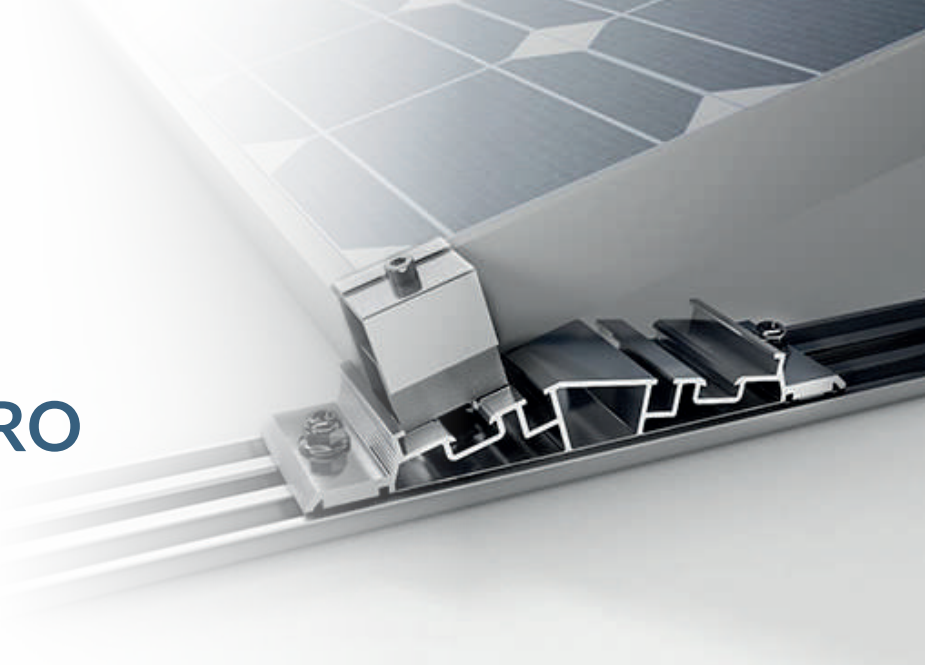




# PROINSO PV RACK TRIANGLE E-W PRO



Robust aluminium structures  
designed and made in Europe



## PROINSO

**3GW**  
PROJECTS SUPPLIED

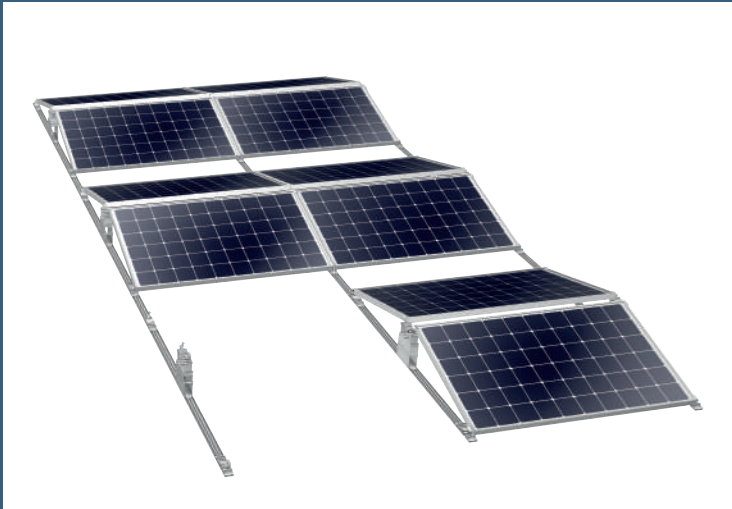
**10+ YEARS**  
EXPERIENCE IN SOLAR

**20+ OFFICES**  
ACROSS 5 CONTINENTS

**3 DIVISIONS**  
DISTRIBUTION & INTEGRATION,  
TECHNOLOGY,  
EPM

**2,500**  
QUALIFIED INSTALLERS

PROINSO PV Rack is one of the simplest rooftop structures to assemble on the PV market. It adds exceptional value to both commercial and residential projects by offering versatility and usability. Designed and manufactured in Europe and certified by TÜV, PROINSO PV Rack reduces the risk to the installer.



Our TRIANGLE E-W PRO can be installed in East-West orientation without a penetration of the roof and a minimum use of ballast. The TRIANGLE E-W PRO is available in 10 or 15 degree to allow a layout optimisation either in regards to maximum output or maximum number of modules.



### EASY TO INSTALL

Thanks to the flexible design of the TRIANGLE E-W PRO it is possible to use the same components for 10 and 15 degree by simply twisting the foot point at the front and the upper part of the middle leg. The proven technology of the module clamping allows a fast and easy installation.



### COST EFFICIENT

The TRIANGLE E-W PRO allows optimisation of components used through project customisation. Our engineers will calculate the required quantity of rails and fixing points based on your project specifications, enabling you to reduce the overall cost of system.



### ROBUST & DURABLE

All PROINSO PV Rack components are made from aluminium and stainless steel and certified by TÜV Rheinland. The high resistance to corrosion guarantees a maximum life span. Additionally, all structure parts can be recycled.



## TECHNICAL SPECIFICATIONS

<b>APPLICATION</b>	Flat roofs
<b>ROOFING</b>	For all roof coverings (also gravel)
<b>ROOF INCLINATION</b>	5°
<b>BUILDING HEIGHT</b>	Depends on wind loads on site
<b>PV-MODULES</b>	Framed, frameless
<b>MODULE WIDTH</b>	900-1050mm
<b>MODULE LENGTH</b>	Up to 1675mm (longer modules on request)
<b>MODULE LAYOUT</b>	In connection
<b>MODULE ORIENTATION</b>	Landscape
<b>PITCH</b>	10° or 15°
<b>SIZE OF MODULE ARRAY</b>	Min. 10m <sup>2</sup>
<b>POSITION OF THE MODULE ARRAY</b>	No special requirements
<b>STANDARDS</b>	Eurocode 0 - Basis of structural design Eurocode 1 – Action on structures Eurocode 9 – Design of aluminium structures
<b>SUPPORTING PROFILES</b>	Extruded aluminium profiles (EN AW 6063 T6)
<b>RAIL FIXATIONS</b>	Side fixing clip: Aluminium (EN AW 6063 T6)
<b>SMALL PARTS</b>	Stainless steel (V2A)
<b>COLOUR</b>	Aluminium: plate finish
<b>WARRANTY</b>	10 years



## EACH 1KW BOX CONTAINS THESE ELEMENTS



Ballast profile



Central support



End clamp Assy



Front foot



Ground rails



Mid clamp assy



Strut triangles



T head bolt and nut

### PROINSO HQ

943 Yeovil Road  
SL1 4NH Slough  
UNITED KINGDOM  
info@proinso.net  
+44 (0) 17 5353 8448

### PROINSO SOUTH AFRICA

7th Floor, Mandela Rhodes Place,  
Cnr of Wale and Burg Street,  
Cape Town, 8000,  
South Africa  
southafrica@proinso.net  
+(27) 021 410 8908

### PROINSO AMERICAS

1030 Riverside PKWY Suite 130  
West Sacramento  
CA 95605, United States  
usa@proinso.net  
(+1) 916 374 8722

### PROINSO EAST ASIA

15th Floor, 100 Queen's Road  
Center Central, Hong Kong  
china@proinso.net  
+852 3960 6363

### PROINSO SOUTH ASIA

2-22 Evergreen Industrial  
Estate Shakti Mill Lane  
Mahalaxmi  
400011 Mumbai, India  
india@proinso.net  
(+91) 022 4004 2286